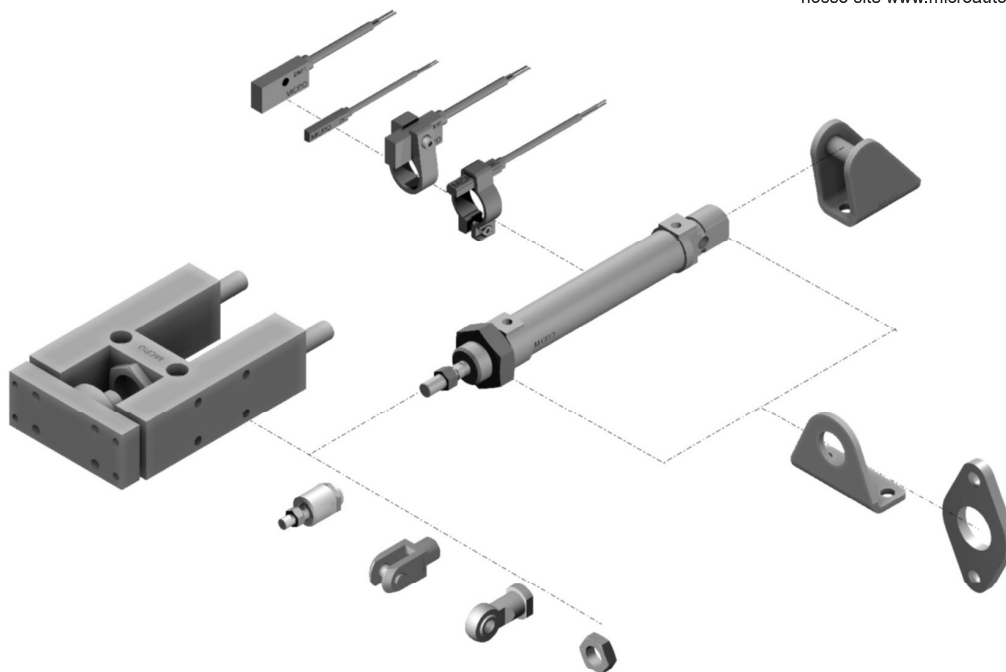


Montagens e acessórios

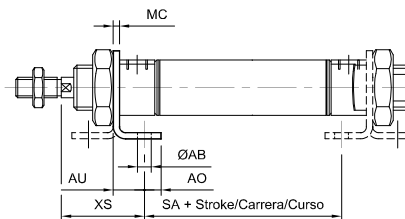
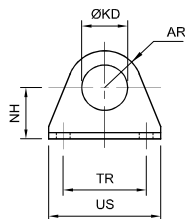
ARQUIVOS CAD DXF e SOLIDOS

Faça os download dos arquivos de nosso site www.microautomacion.com



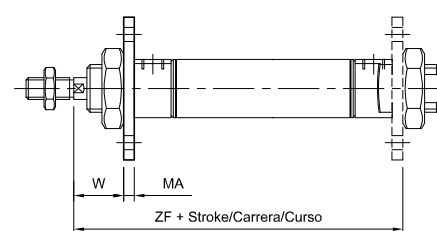
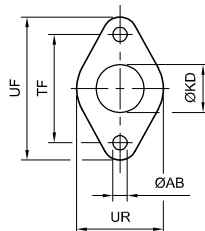
Montagem com pé

Ø	MiCRO
8-10	0.001.000.001
12-16	0.003.000.001
20-25	0.005.000.001



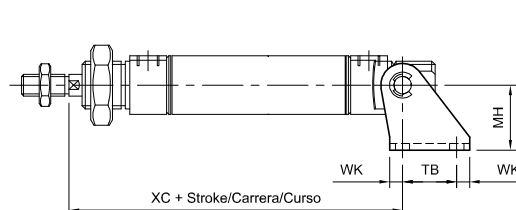
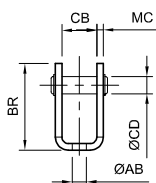
Montagem com placa

Ø	MiCRO
8-10	0.001.000.003
12-16	0.003.000.003
20-25	0.005.000.003

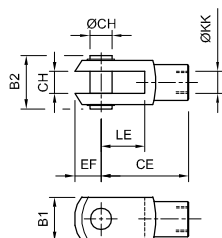


Montagem com basculante traseiro

Ø	MiCRO
8-10	0.001.000.006
12-16	0.003.000.006
20-25	0.005.000.006

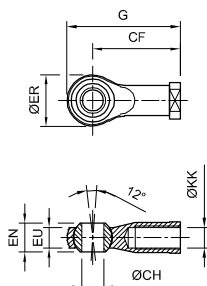


Garfo para a haste



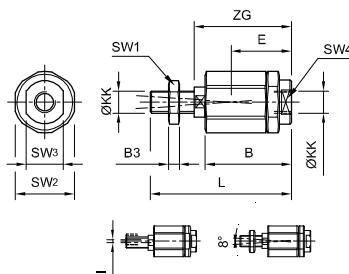
Ø	MiCRO
8-10	0.001.000.010
12-16	0.003.000.010
20	0.005.000.010
25	0.007.000.010

Garfo com rótula para haste



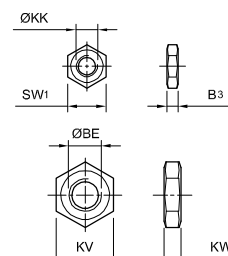
Ø	MiCRO
25	0.007.000.012

Rótula para haste



Ø	MiCRO
8-10	0.001.000.023
12-16	0.003.000.023
20	0.005.000.023
25	0.007.000.023

Porcas para tampa e haste



Ø	MiCRO
M 4 x 0,7	0.001.000.011
M 6 x 1	0.003.000.011
M 8 x 1,25	0.005.000.011
M 10 x 1,25	0.007.000.011
M 12 x 1,25	0.008.000.011
M 16 x 1,5	0.009.000.011
M 22 x 1,5	0.006.000.011

Ø	ØAB	AO	AR	AU	B	BE	B ₁	B ₂	B ₃	BR	CB	ØCD	CE	CF	CH	E	EF	EN	ER	EU	G	I	KD	ØKK	
8-10	4,5	5	11	10	20	M12	8	12	3,2	25	8,1	4	16		4	16	5						1	12,1	M 4 x 0,7
12-16	5,5	6	13,5	12,5	21,5	M16	12	17	5	32,5	12,1	6	24		6	15,5	7						1	16,1	M 6 x 1
20	6,6	8	18	15	33	M22	16	21	5	40	16,1	8	32		8	20,5	10					1	22,1	M 8 x 1,25	
25	6,6	8	18	15	46	M22	20	25	6	40	16,1	8	40	43	10	31	12	14	28	10,5	57	2	22,1	M 10 x 1,25	

Ø	KV	KW	L	LE	MA	MC	MH	NH	SA	SW ₁	SW ₂	SW ₃	SW ₄	TB	TF	TR	UF	UR	US	W	WK	XC	XS	ZF	ZG
8-10	19	7	33	8	3	2	20	16	30	7	12,7	6	4	14	30	25	40	25	35	13	4	64	24	65	25
12	24	8	37	12	4	2,5	25	20	26	10	14,5	7	5	20	40	32	52	30	42	18	5	75	32	72	25
16	24	8	37	12	4	2,5	25	20	36	10	14,5	7	5	20	40	32	52	30	42	18	5	82	32	82	25
20	32	10	49	16	5	3	30	25	42	13	19	11	7	25	50	40	66	40	54	19	6	95	36	95	34
25	32	10	69,5	20	5	3	30	25	45	17	32	19	12	25	50	40	66	40	54	23	6	104	40	102	49,5

Suporte para o sensor magnético

Ø	DMR	DSL
8	0.021.000.017	0.041.000.017
10	0.022.000.017	0.900.005.123
12	0.023.000.017	0.900.005.123
16	0.024.000.017	0.900.005.123
20	0.025.000.017	0.900.005.123
25	0.026.000.017	0.900.005.123

